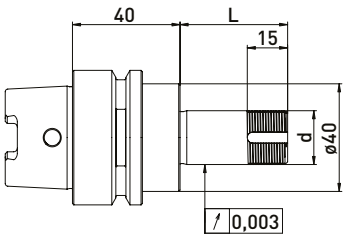
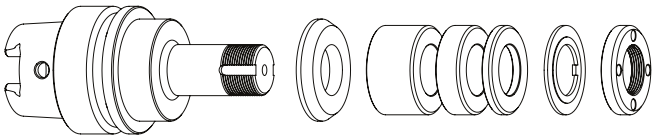


Schütte HSK50 // Shaft ø20 mm // RS ø35 mm

For Schütte tool grinding machines with ring set ø35 mm **Series 205**

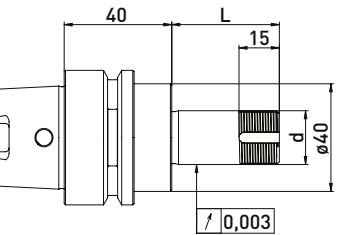
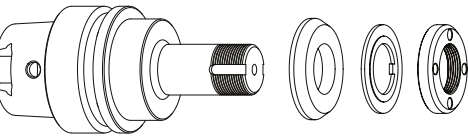
GWA HSK50 // ø20 mm // RS ø35 mm



Delivered equipped:
Reducing washer, ring set ø35 mm, lock washer and clamping nut

Ring set ø35 mm						
Order No.	HSK	d	L	B 20	B 10	B 4
300012512	HSK50	20	40	-	1	3
300012522	HSK50	20	60	1	1	3
300012532	HSK50	20	75	1	2	4
300012542	HSK50	20	85	2	1	4
300012552	HSK50	20	100	2	3	3

GWA HSK50 // ø20 mm // without RS



Delivered equipped:
Reducing washer, lock washer and clamping nut

Order No.	HSK	d	L
300012511	HSK50	20	40
300012521	HSK50	20	60
300012531	HSK50	20	75
300012541	HSK50	20	85
300012551	HSK50	20	100

Accessories Schütte grinding wheel adapter HSK50 // Shaft ø20 mm // Ring set ø35 mm

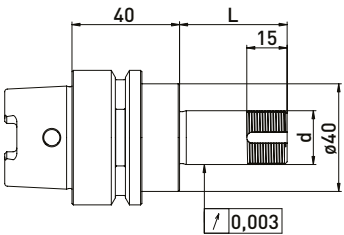
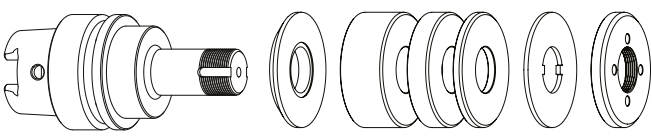
Order No.	Name
350050010	Universal assembly device ø50
350040010	Clamping nut wrench PC27 for ø20
350040011	Clamping nut wrench PC27 for ø20
350040040	*Clamping nut wrench PC29 for ø20 for clamping nut with blancing option
350040041	*Clamping nut wrench PC29 for ø20
350020081	*Balancing weight pair for clamping nut ø35 // 40gmm

Order No.	Name
350012020	Spacer ring ø35 x ø20 x 20
350012010	Spacer ring ø35 x ø20 x 10
350012004	Spacer ring ø35 x ø20 x 4
350015006	Reducing washer ø40 x ø35 x ø20 x 6
350030020	Lock washer ø35 x ø20 x 2
350020030	Clamping nut ø35 x 6 M20 x 1 PC27
350020080	*Clamping nut with balancing option ø35 x ø40 x 8 x M20 x 1 PC29
350015005	Support washer ø35 x ø60 x ø20 x 6

Schütte HSK50 // Shaft ø20 mm // RS ø50 mm

For Schütte tool grinding machines with ring set ø50 mm **Series 205**

GWA HSK50 // ø20 mm // RS ø50 mm



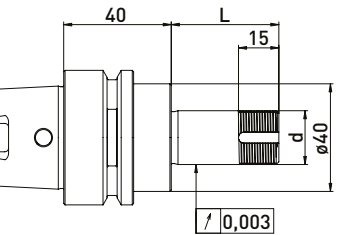
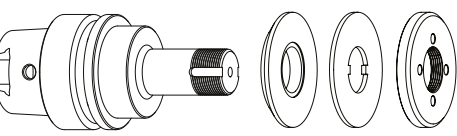
Delivered equipped:
Ring set ø50 mm, lock washer and clamping nut

Ring set ø50mm						
Order No.	HSK	d	L	B 20	B 10	B 4
300012012	HSK50	20	40	-	1	3
300012022	HSK50	20	60	1	1	3
300012032	HSK50	20	75	1	2	4
300012042	HSK50	20	85	2	1	4
300012052	HSK50	20	100	2	3	3

Accessories Schütte grinding wheel adapter HSK50 // Shaft ø20 mm // Ring set ø50 mm

Order No.	Name
350050010	Universal assembly device ø50
350040010	*Clamping nut wrench PC27 for ø20
350040011	*Clamping nut wrench PC27 for ø20
350020021	*Balancing weight pair for clamping nut ø50 // 100gmm

GWA HSK50 // ø20 mm // without RS



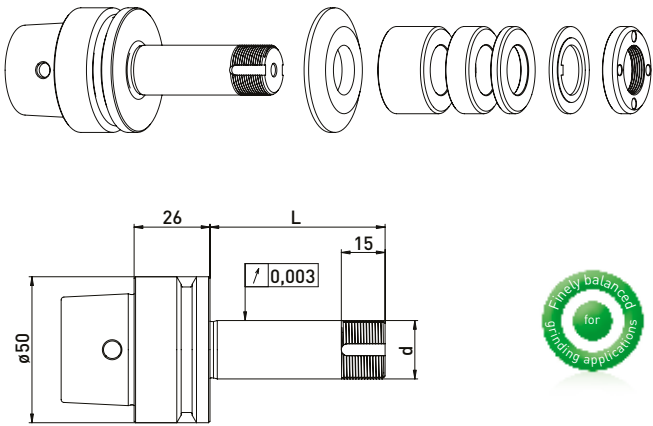
Delivered equipped:
Lock washer and clamping nut

Order No.	HSK	d	L
300012011	HSK50	20	40
300012021	HSK50	20	60
300012031	HSK50	20	75
300012041	HSK50	20	85
300012051	HSK50	20	100

Schütte HSK-E50 // Shaft ø20 mm // RS ø35 mm

For Schütte tool grinding machines with ring set ø35 mm **Series 305**

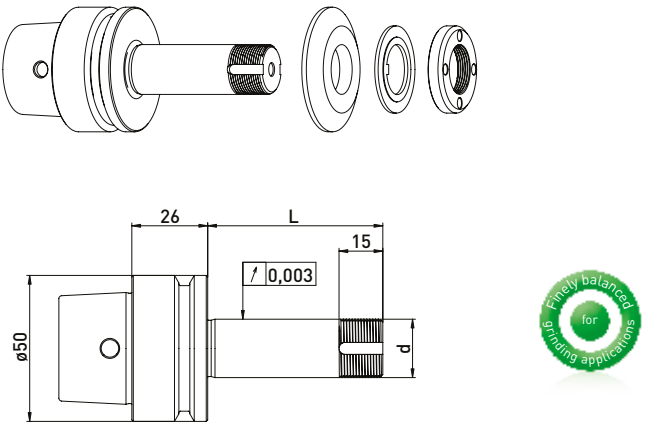
GWA HSK-E50 // ø20 mm // RS ø35 mm



Delivered equipped:
Reducing washer, ring set ø35 mm, lock washer and clamping nut

Ring set ø35 mm						
Order No.	HSK	d	L	B 20	B 10	B 4
300052512	HSK-E50	20	40	-	1	3
300052522	HSK-E50	20	60	1	1	3
300052532	HSK-E50	20	85	2	1	4

GWA HSK-E50 // ø20 mm // without RS



Delivered equipped:
Reducing washer, lock washer and clamping nut

Order No.	HSK	d	L
300052511	HSK-E50	20	40
300052521	HSK-E50	20	60
300052531	HSK-E50	20	85

Accessories Schütte grinding wheel adapter HSK-E50 // Shaft ø20 mm // Ring set ø35 mm

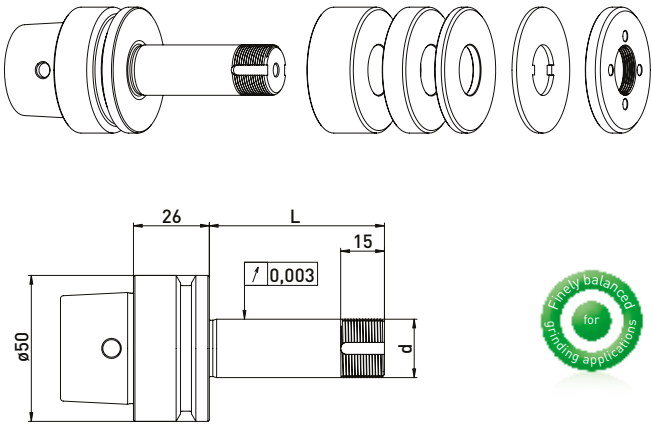
Order No.	Name	Order No.	Name
350050010	Universal assembly device ø50	350012020	Spacer ring ø35 x ø20 x 20
350040010	Clamping nut wrench PC27 for ø20	350012010	Spacer ring ø35 x ø20 x 10
350040011	Clamping nut wrench PC27 for ø20	350012004	Spacer ring ø35 x ø20 x 4
350040040	*Clamping nut wrench PC29 for ø20 for clamping nut with blancing option	350015001	Reducing washer ø50 x ø35 x ø20 x 6
350040041	*Clamping nut wrench PC29 for ø20	350030020	Lock washer ø35 x ø20 x 2
350020081	*Balancing weight pair for clamping nut ø35 // 40gmm	350020030	Clamping nut ø35 x 6 M20 x 1 PC27
		350020080	*Clamping nut with balancing option ø35 x ø40 x 8 x M20 x 1 PC29
		350015005	Support washer ø35 x ø60 x ø20 x 6

Due to constant improvements to and further developments of our designs, the information and illustrations in this brochure are non-binding. The specifications and mounted lengths provided by the machine manufacturer must be observed. All specifications are in mm.

Schütte HSK-E50 // Shaft ø20 mm // RS ø50 mm

For Schütte tool grinding machines with ring set ø50 mm **Series 305**

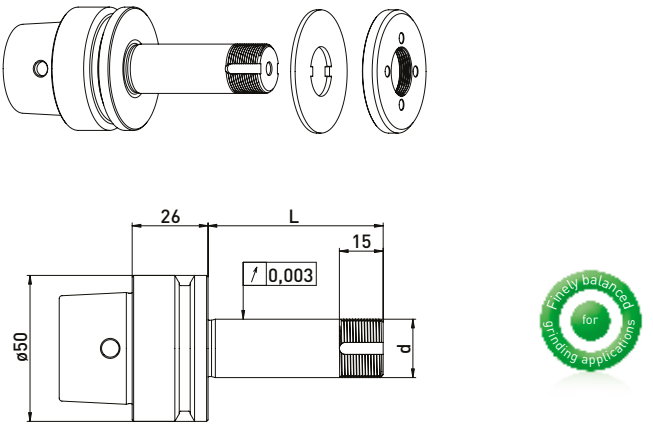
GWA HSK-E50 // ø20 mm // RS ø50 mm



Delivered equipped:
Ring set ø50 mm, lock washer and clamping nut

Ring set ø50mm						
Order No.	HSK	d	L	B 20	B 10	B 4
300052012	HSK-E50	20	40	-	1	4
300052022	HSK-E50	20	60	1	1	4
300052032	HSK-E50	20	85	2	2	3

GWA HSK-E50 // ø20 mm // without RS



Delivered equipped:
Lock washer and clamping nut

Order No.	HSK	d	L
300052011	HSK-E50	20	40
300052021	HSK-E50	20	60
300052031	HSK-E50	20	85

Accessories Schütte grinding wheel adapter HSK-E50 // Shaft ø20 mm // Ring set ø50 mm

Order No.	Name	Order No.	Name
350050010	Universal assembly device ø50	350011020	Spacer ring ø50 x ø20 x 20
350040010	*Clamping nut wrench PC27 for ø20	350011010	Spacer ring ø50 x ø20 x 10
350040011	*Clamping nut wrench PC27 for ø20	350011004	Spacer ring ø50 x ø20 x 4
350020021	*Balancing weight pair for clamping nut ø50 // 100gmm	350030010	Lock washer ø50 x ø20 x 2
		350020060	Clamping nut ø50 x 6 x M20 x 1 PC27
		350020020	*Clamping nut with balancing option ø50 x 8,5 M20 x 1,0 PC27

*related items